



Meghalaya Enterprise Architecture for Government of Meghalaya

MeghEA Vision and Scope

Planning Department,
Government of Meghalaya

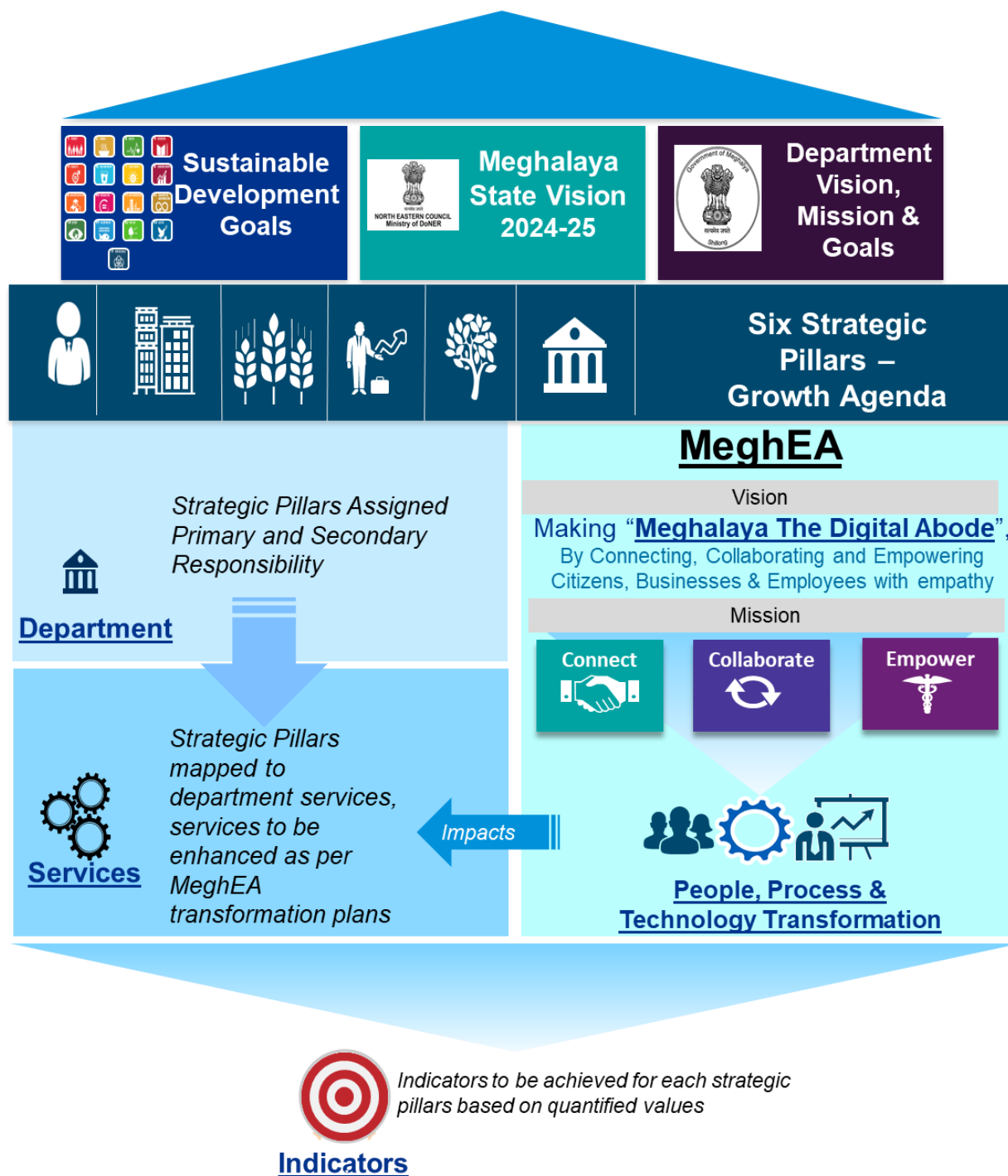
October 2019

KPMG.com/in

Contents

1.	Executive Summary	7
2.	Growth Agenda of the State of Meghalaya	11
2.1	The Strategic Pillars aligned with the Growth Agenda	12
2.1.1	Human Development	12
2.1.2	Infrastructure	17
2.1.3	Primary Sector	19
2.1.4	Entrepreneurship.....	21
2.1.5	Environment Sustainability	22
2.1.6	Governance for the people.....	24
2.2	Assumptions	25
3.	Meghalaya Government Transformation.....	27
3.1	MeghEA Vision Framework	27
3.2	MeghEA Vision, Mission & Foundational Capabilities.....	29
3.2.1	The Vision	29
3.2.2	The Mission.....	29
3.2.3	Strategic Alignment	30
3.2.4	Foundational Capability	30
3.3	Key Drivers	35
4.	MeghEA High-Level Architecture.....	42
4.1	Statement of Architecture Work.....	42
4.2	Strategic Alignment.....	43
4.3	High-Level Architecture.....	44
5.	Services Alignment with State Priorities.....	45
6.	MeghEA Scope and Plan	50
6.1	Scope of Project	50
6.2	Risks	52
6.3	Challenges	53
6.4	High-Level Communication Plan Matrix.....	55
7.	Way Forward.....	57

High Income State by 2030



Thank you



The information contained herein is of a general nature and is not intended to address the circumstances of any particular individual or entity. Although we endeavor to provide accurate and timely information, there can be no guarantee that such information is accurate as of the date it is received or that it will continue to be accurate in the future. No one should act on such information without appropriate professional advice after a thorough examination of the particular situation.

© 2019 KPMG Advisory Services Private Limited, an India private company and a member firm of the KPMG network of independent member firms affiliated with KPMG International Cooperative ("KPMG International"), a Swiss entity. All rights reserved.